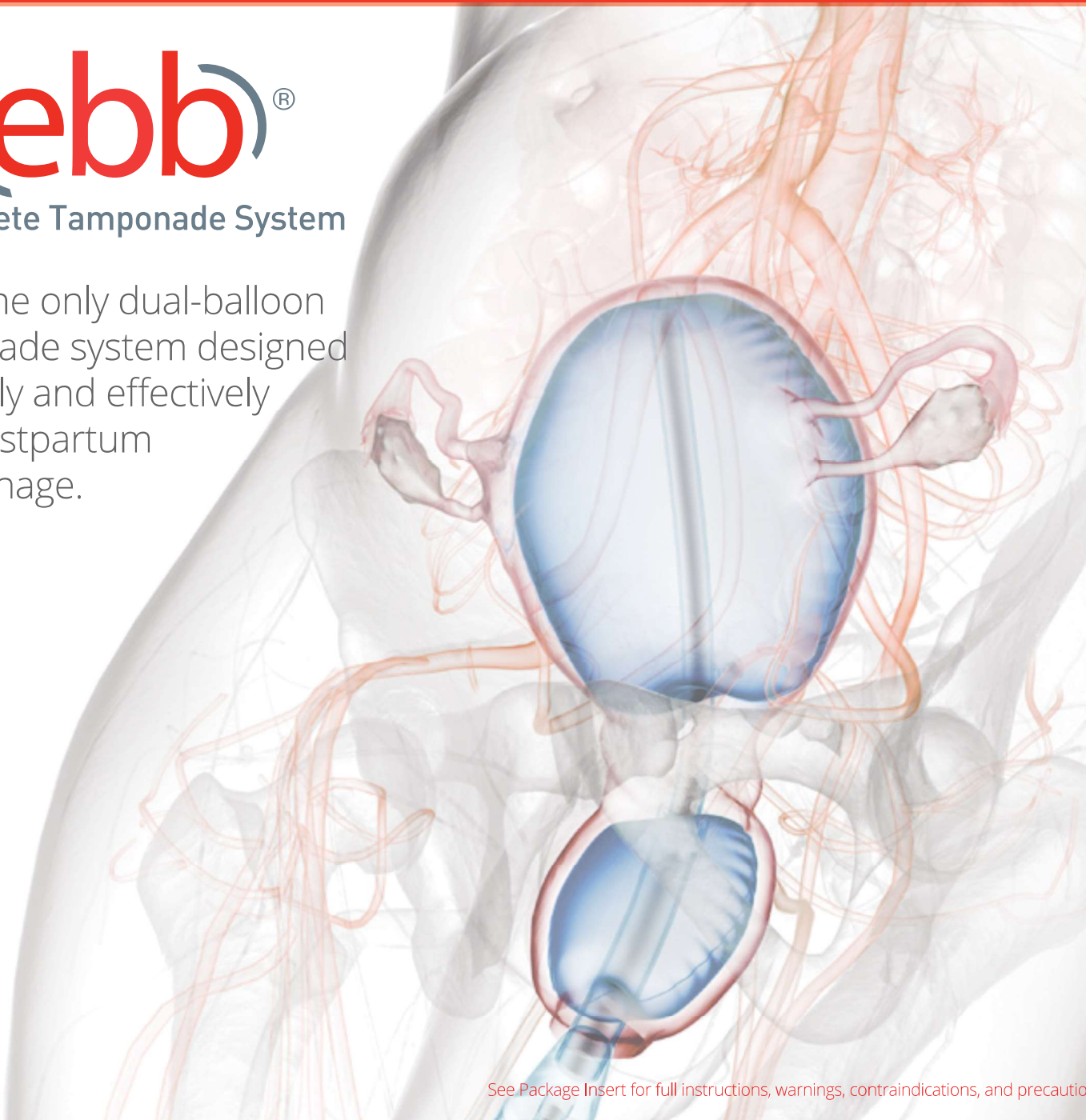




## Complete Tamponade System

ebb is the only dual-balloon tamponade system designed to quickly and effectively treat postpartum hemorrhage.



See Package Insert for full instructions, warnings, contraindications, and precautions.

## ebb, Designed for Emergency Situations



### Conforms to Uterus

The malleable balloon material allows ebb to adapt to the patient and conform to the uterus.



### Rapid Deployment

Simply spike an IV bag and gently squeeze to inflate the balloons in seconds, using the direct-fill ports.



### Safety Assurance

Monitor blood loss through the drain and verify lumen patency using the unique irrigation port.



### Eliminate Vaginal Packing

The dual-balloon design anchors the device, eliminating the need to pack the vagina and risk of retained pack.

~115,000 mothers with PPH in US every year<sup>5</sup>

Over 1M mothers in the EU at risk every year<sup>3</sup>

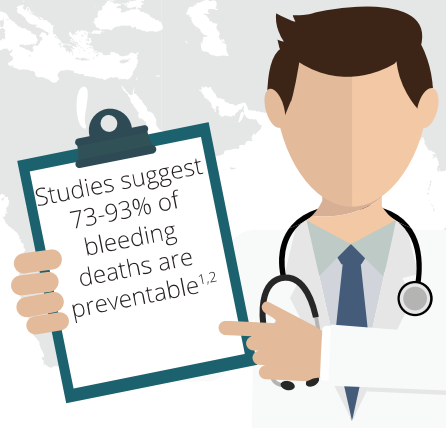
440 mothers die every day in Africa from PPH<sup>6</sup>

Studies suggest 73-93% of bleeding deaths are preventable<sup>1,2</sup>

In China, 1/3 of maternal deaths are linked to PPH<sup>4</sup>



PPH Complicates About 10% of Births Worldwide<sup>3</sup>



### Clinical Evidence of ebb's Efficacy



ebb Significantly or Completely Stopped Bleeding

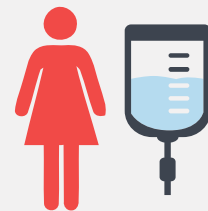


Vaginal Balloon Used

“the [ebb] is very useful in the management of PPH due to uterine atony and abnormal placentation”



Avoided Hysterectomy 92%



45% required >500mL fluid to stop bleeding

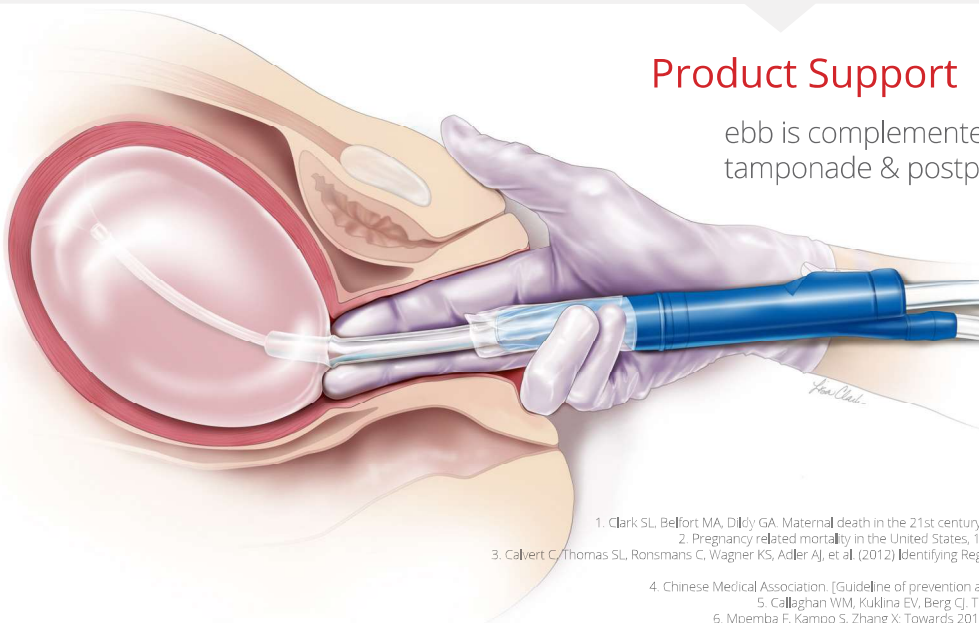
Data and quote:  
Initial experience with a dual-balloon catheter for the management of postpartum hemorrhage. Dildy GA, Belfort MA, Adair D, et al. Am J Obstet Gynecol. 2014; 210:136.e1-6.

### Product Support

ebb is complemented by an offering of training support for tamponade & postpartum hemorrhage.

#### Ordering Information

Product Description	Product Code	Box Quantity
ebb Complete Tamponade System	CTS-1000	1/ea
Non-Sterile, For Training CTS-1000	CTS-NS	1/ea
PPH Trainer Box(Training Accessor)	CTS-TRAINER	1/ea
1 each (CTS-NS & CTS-TRAINER)	CTS-KIT	1/ea



1. Clark SL, Belfort MA, Dildy GA. Maternal death in the 21st century: causes, prevention, and relationship to cesarean delivery. Am J Obstet Gynecol. 2008;199:36e1-36.e5.  
 2. Pregnancy related mortality in the United States, 1998 to 2005. Berg CJ, Callaghan WM, Syverson C, Henderson Z. Obstet Gynecol. 2005;106:1228-1234.  
 3. Calvert C, Thomas SL, Ronsmans C, Wagner KS, Adler AJ, et al. (2012) Identifying Regional Variation in the Prevalence of Postpartum Haemorrhage: A Systematic Review and Meta-Analysis. PLOS ONE 7(7): e41114. doi: 10.1371/journal.pone.0041114  
 4. Chinese Medical Association. [Guideline of prevention and treatment about postpartum hemorrhage (2014)]. Zhonghua Fu Chan Ke Za Zhi 2014; 49: 641-646.  
 5. Callaghan WM, Kuklina EV, Berg CJ. Trends in postpartum hemorrhage: United States, 1994–2006. Am J Obstet Gynecol 2010;202:353.e1-6.  
 6. Mpemba F, Kambo S, Zhang X. Towards 2015: post-partum haemorrhage in sub-Saharan Africa still on the rise. J Clin Nurs. 2014, 23 (5-6): 774-783.

Local Distributor:

**Jan Bye a.s**  
MEDISINSK TEKNIKK  
www.janbye.no post@janbye.no

clinicalinnovations.com  
6-9 The Square, Stockley Park | Heathrow | UB11 1FW | UK  
Phone +44 333 370 4408 | Fax +44 (0) 845 299 1517 |

**CLINICAL INNOVATIONS EUROPE**  
forMOM. forBABY. forLIFE.™